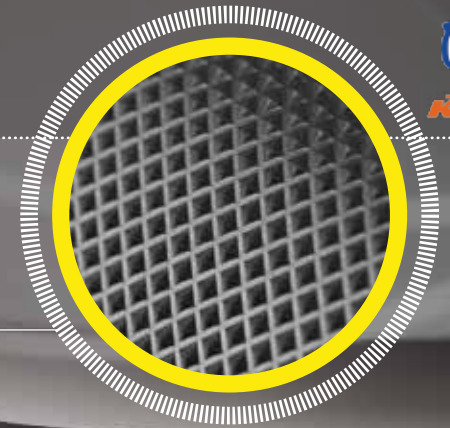
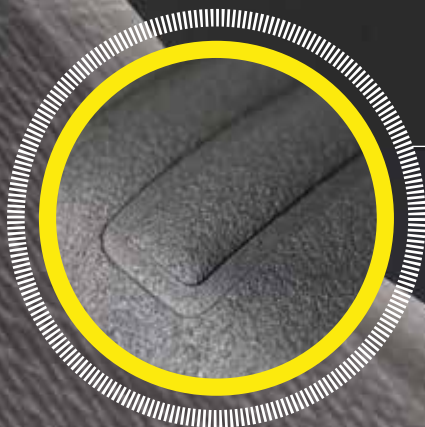


- **Selle Dalla Valle** is an **Italian manufacturer** of motorcycle saddle since **1970**. From the very first development, to the industrialization up to the mass production, all stages are made in house.
- First equipment supplier of **BMW, Ducati, Husqvarna, and KTM**.
- **Designed in partnership** with the most important motorcycle manufacturers.
- **High-end quality** tested by **MXGP** champions such as **Cairolì and Herlings**.



SUPER GRIP ▲

€ 33 + VAT



WAVE

€ 40.95 + VAT



MADE in ITALY



hand sewn

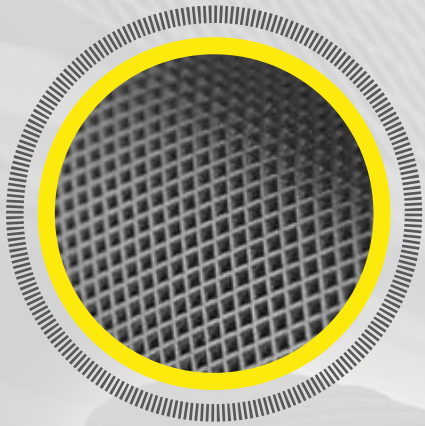


material: **PVC**



according to personal drive style, 2 different grip types:

- uniform
- gradual



SUPER GRIP

€ 33 + VAT

- **Uniform** grip over the entire contact surface;
- for riders preferring to **fit snugly** to the saddle, ideal when **mud get** the saddle slipping or for an **aggressive driving**;
- same saddle used by the **2014 MXGP World Champion: Antonio Cairoli**.



WAVE

€ 40.95 + VAT

- **Gradual Grip**: front area with medium grip; rear area with padded reinforcements (**wave**) for a superior non-slip action;
- for riders preferring a **dynamic driving** and a wider **freedom of movement** and highly recommended to **endurists**;
- enables rider to change position **without rising** from the saddle.

APPLICATION LIST*:

MODEL	YEAR	WAVE	SUPER GRIP
Honda CRF 450 4T	2000-2008 e 2013	SDV 001W	SDV 001R
Honda CRF 250 4T	2000-2009 e 2014		
Honda CR 125-250-450 2T	2000 2015		
Yamaha YZ 125-250-450 2T	2000 2015		
Yamaha YZF 250-450 4T	2000 2013		
Suzuki RM 250-450- 2T-4T	2000 2014		
Kawasaki KX-KXF 250-450 2T-4T	2000 2014		
KTM tutti	2000 2009		
KTM tutti	2010		
Yamaha YZF 250-450 4T	2014 2015		
Honda CRF 250 4T	2000 2013	SDV 003W	SDV 003R
Honda CRF 450 4T	2009 2012	SDV 004W	SDV 004R

* please visit our web page athenaparts.com, for the full list of applications